



MONTHLY REPORT

May 2014

	May-14	Apr-14	Percent Change	May-13	Percent Change
PASSENGERS					
Adult	29,239	57,108	-48.8%	29,177	0.2%
Senior	1,529	1,391	9.9%	1,676	-8.8%
Disabled	1,115	1,063	4.9%	1,149	-3.0%
Wheelchair	524	434	20.7%	412	27.2%
Child	8,999	10,563	-14.8%	9,723	-7.4%
Child under 5	633	305	107.5%	583	8.6%
Total Passengers	42,039	70,864	-40.7%	42,720	-1.6%
FARES	\$50,024.24	\$32,933.40	51.9%	\$47,526.65	5.3%
SERVICE MILES	63,064	67,263	-6.2%	65,341	-3.5%
SERVICE HOURS	3,721	4,046	-8.0%	3,851	-3.4%
Passengers per Hour	11.30	17.51	-35.5%	11.09	1.8%

RIDERSHIP COMPARISON

Route	REPORT MONTH - THIS YEAR/LAST YEAR				FISCAL YEAR TO DATE			
	May-14	May-13	Variance	% Change	FY 13/14	FY 12/13	Variance	% Change
Mammoth Express	240	222	18	8.1%	2,867	2,800	67	2.4%
Lone Pine to Bishop	420	532	-112	-21.1%	4,228	4,792	-564	-11.8%
Lone Pine DAR	284	462	-178	-38.5%	3,870	5,036	-1,166	-23.2%
Tecopa	14	8	6	75.0%	109	116	-7	-6.0%
Walker (total)	154	190	-36	-18.9%	1,971	1,968	3	0.2%
Benton to Bishop	68	45	23	51.1%	513	469	44	9.4%
Bishop DAR	3,465	3,715	-250	-6.7%	33,435	37,870	-4,435	-11.7%
Nite Rider	460	367	93	25.3%	3,388	2,574	814	31.6%
Mammoth FR	16,130	15,104	1,026	6.8%	336,672	336,480	192	0.1%
Mammoth DAR	421	607	-186	-30.6%	3,842	5,802	-1,960	-33.8%
Reno	357	461	-104	-22.6%	4,764	4,597	167	3.6%
Lancaster	436	473	-37	-7.8%	4,716	4,940	-224	-4.5%
Reds Meadow	7,632	5,644	1,988	35.2%	123,920	134,882	-10,962	-8.1%
MMSA	11,402	14,452	-3,050	-21.1%	371,292	529,693	-158,401	-29.9%
June Lake Shuttle	0	0			2,451	1,041	1,410	135.4%
TOTALS	42,039	42,810	-771	-1.8%	898,038	1,073,060	-164,060	-15.3%

PASSENGERS PER SERVICE HOUR

Route	REPORT MONTH - THIS YEAR/LAST YEAR			FISCAL YEAR TO DATE		
	May-14	May-13	% Change	FY 13/14	FY 12/13	% Change
Mammoth Express	3.65	3.22	13.2%	4.06	3.99	1.9%
Lone Pine to Bishop	3.72	4.15	-10.3%	3.41	3.80	-10.2%
Lone Pine DAR	1.93	3.00	-35.7%	2.40	3.16	-24.0%
Tecopa	1.27	0.80	59.1%	1.22	1.08	13.0%
Walker (total)	1.05	1.17	-10.6%	1.17	1.17	-0.2%
Benton to Bishop	2.49	1.71	45.8%	1.81	1.72	5.0%
Bishop DAR	4.25	3.97	7.0%	3.68	3.92	-6.2%
Nite Rider	6.17	5.48	12.7%	4.67	3.76	24.1%
Mammoth FR	16.70	17.62	-5.2%	24.62	24.83	-0.9%
Mammoth DAR	2.16	2.31	-6.5%	1.73	1.93	-10.4%
Reno	1.64	2.10	-21.8%	1.98	1.90	4.4%
Lancaster	3.40	3.39	0.3%	3.16	3.26	-3.1%
Reds Meadow	38.13	29.65	28.6%	29.93	30.96	-3.3%
MMSA	20.62	25.23	-18.3%	42.13	40.78	3.3%
June Lake Shuttle	NA	NA	NA	6.01	4.60	30.6%
Total	11.30	11.09	1.8%	18.58	19.94	-6.8%

Route	Fares	Adults	Snr	Dis	W/C	Child	Free	Total Pax	Yd Hrs	Svc Hours	Yd Mi	SVC MILES	AVG FARE	REV/SVC MILE	PAX / SVC HR	MI / SVC HR	PAX / SVC MI
May-14																	
Mammoth Express	\$1,303.90	174	26	24	1	9	6	240	90	66	3,031	2,919	5.43	.45	3.65	46.1	0.08
Lone Pine to Bishop	\$1,948.25	257	64	47	2	26	24	420	135	113	5,078	4,835	4.64	.40	3.72	45.0	0.09
Lone Pine DAR	\$743.00	38	62	48	71	62	3	284	154	147	1,240	1,227	2.62	.61	1.93	8.4	0.23
Tecopa	\$69.00	0	14	0	0	0	0	14	11	11	167	167	4.93	.41	1.27	15.2	0.08
Walker (total)	\$558.70	13	71	70	0	0	0	154	161	147	1,657	1,162	3.63	.48	1.05	11.2	0.13
Benton to Bishop	\$343.50	27	29	2	0	2	8	68	31	27	906	801	5.05	.43	2.49	33.2	0.08
Bishop DAR	\$7,588.80	939	1,012	577	417	209	311	3,465	872	816	9,708	8,943	2.19	.85	4.25	11.9	0.39
Mule Days	\$487.00	418	87	1	0	42	8	556	64	59	698	657	.88	.74	9.41	11.8	0.85
Nite Rider	\$1,846.80	376	12	21	28	0	23	460	77	75	1,263	1,263	4.01	1.46	6.17	17.0	0.36
Mammoth FR	\$0.00	9,986	0	9	0	6,135	0	16,130	997	966	14,960	14,524	N/A	N/A	16.70	15.5	1.11
Mammoth DAR	\$1,095.29	142	39	228	0	5	7	421	199	195	1,008	924	2.60	1.19	2.16	5.2	0.46
Reno	\$6,393.25	223	60	49	2	19	4	357	239	218	9,920	9,488	17.91	.67	1.64	45.6	0.04
Lancaster	\$5,935.75	319	53	39	3	10	12	436	146	128	6,052	5,953	13.61	1.00	3.40	47.2	0.07
Reds Meadow	\$21,711.00	6,258	0	0	0	1,147	227	7,632	237	200	2,817	2,510	2.84	8.65	38.13	14.1	3.04
MMSA	\$0.00	10,069	0	0	0	1,333	0	11,402	573	553	7,982	7,691	N/A	N/A	20.62	14.4	1.48
Total	\$50,024.24	29,239	1,529	1,115	524	8,999	633	42,039	3,986	3,721	66,487	63,064	1.19	.79	11.30	17.9	0.67
May-13																	
Mammoth Express	\$1,252.50	171	18	11	0	5	17	222	97	69	3,158	3,054	5.64	.41	3.22	45.8	0.07
Lone Pine to Bishop	\$2,704.55	313	87	72	31	20	9	532	146	128	5,419	5,243	5.08	.52	4.15	42.3	0.10
Lone Pine DAR	\$1,147.80	23	147	73	89	122	8	462	161	154	1,546	1,542	2.48	.74	3.00	10.0	0.30
Tecopa	\$40.00	0	8	0	0	0	0	8	10	10	309	309	5.00	.13	.80	30.9	0.03
Walker (total)	\$802.00	15	131	40	0	1	3	190	177	162	1,992	1,547	4.22	.52	1.17	12.3	0.12
Benton to Bishop	\$186.00	11	22	2	0	0	10	45	27	26	811	810	4.13	.23	1.71	30.8	0.06
Bishop DAR	\$8,586.20	1,338	922	516	271	334	334	3,715	998	936	11,502	10,329	2.31	.83	3.97	12.3	0.36
Mule Days	\$390.45	254	169	0	0	11	4	438	60	56	661	593	.89	.66	7.86	11.9	0.74
Nite Rider	\$1,469.40	307	9	25	13	3	10	367	73	67	1,183	1,167	4.00	1.26	5.48	17.7	0.31
Mammoth FR	\$0.00	8,794	0	0	0	6,310	0	15,104	882	857	13,638	13,261	N/A	N/A	17.62	15.9	1.14
Mammoth DAR	\$1,532.00	208	37	324	0	3	35	607	268	263	1,536	1,445	2.52	1.06	2.31	5.8	0.42
	\$7,029.50	310	75	38	4	22	12	461	241	220	9,618	9,240	15.25	.76	2.10	43.8	0.05
Lancaster	\$6,619.25	350	51	48	4	3	17	473	157	139	6,543	6,445	13.99	1.03	3.39	46.9	0.07
Reds Meadow	\$15,767.00	4,671	0	0	0	849	124	5,644	221	190	2,722	2,382	2.79	6.62	29.65	14.3	2.37
MMSA	\$0.00	12,412	0	0	0	2,040	0	14,452	593	573	8,252	7,974	N/A	N/A	25.23	14.4	1.81
Total	\$47,526.65	29,177	1,676	1,149	412	9,723	583	42,720	4,113	3,851	68,890	65,341	1.11	.73	11.09	17.9	0.65

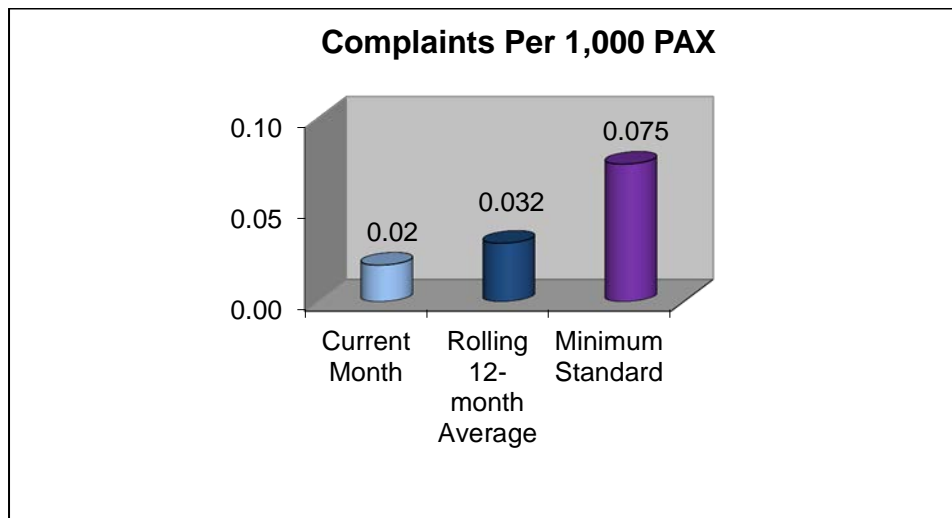
VARIANCE BY ROUTE (RAW NUMBERS) – May 2014 TO May 2013																	
ROUTES	FARES	ADULTS	SNR	DIS	W/C	CHILD	FREE	TOTAL PAX	YD HOURS	SVC HOURS	YD MILES	SVC MILES	AVG FARE	REV/SVC MILE	PAX / SVC HR	MI / SVC HR	PAX / SVC MI
Mammoth Express	\$51.40	3	8	13	1	4	-11	18	-7	-3	-127	-135	-0.21	0.04	0.43	0.23	0.01
Lone Pine to Bishop	-\$756.30	-56	-23	-25	-29	6	15	-112	-11	-15	-341	-408	-0.45	-0.11	-0.43	2.75	-0.01
Lone Pine DAR	-\$404.80	15	-85	-25	-18	-60	-5	-178	-7	-7	-306	-315	0.13	-0.14	-1.07	-1.61	-0.07
Tecopa	\$29.00	0	6	0	0	0	0	6	1	1	-142	-142	-0.07	0.28	0.47	-15.72	0.06
Walker (total)	-\$243.30	-2	-60	30	0	-1	-3	-36	-16	-15	-335	-385	-0.59	-0.04	-0.12	-1.02	0.01
Benton to Bishop	\$157.50	16	7	0	0	2	-2	23	4	1	95	-9	0.92	0.20	0.78	2.41	0.03
Bishop DAR	-\$997.40	-399	90	61	146	-125	-23	-250	-126	-120	-1794	-1386	-0.12	0.02	0.28	-0.39	0.03
Mule Days	\$96.55	164	-82	1	0	31	4	118	4	3	37	64	-0.02	0.08	1.55	-0.04	0.11
Nite Rider	\$377.40	69	3	-4	15	-3	13	93	4	8	80	96	0.01	0.20	0.70	-0.70	0.05
Mammoth FR	\$0.00	1192	0	9	0	-175	0	1026	115	109	1322	1263	N/A	N/A	-0.92	-0.43	-0.03
Mammoth DAR	-\$436.71	-66	2	-96	0	2	-28	-186	-70	-68	-528	-521	0.08	0.13	-0.15	-0.67	0.04
Reno	-\$636.25	-87	-15	11	-2	-3	-8	-104	-2	-2	302	248	2.66	-0.09	-0.46	1.79	-0.01
Lancaster	-\$683.50	-31	2	-9	-1	7	-5	-37	-11	-11	-491	-492	-0.38	-0.03	0.01	0.29	0.00
Reds Meadow	\$5,944.00	1587	0	0	0	298	103	1988	16	10	95	128	N/A	N/A	8.48	-0.23	0.67
MMSA	\$0.00	-2,343	0	0	0	-707	0	-3,050	-20	-20	-270	-283	N/A	N/A	-4.61	0.03	-0.33

VARIANCE BY ROUTE (PERCENTAGE) – May 2014 TO May 2013																	
Route	Fares	Adults	Snr	Dis	W/C	Child	Free	Total Pax	Yd Hrs	Total Svc Hours	Yd Mi	TOT SVC MILES	AVG FARE	REV/SVC MILE	PAX / SVC HR	MI / SVC HR	PAX / SVC MI
Mammoth Express	4%	2%	44%	118%		80%	-65%	8%	-7%	-5%	-4%	-4%	-4%	9%	13%	1%	13%
Lone Pine to Bishop	-28%	-18%	-26%	-35%	-94%	30%	167%	-21%	-8%	-12%	-6%	-8%	-9%	-22%	-10%	6%	-14%
Lone Pine DAR	-35%	65%	-58%	-34%	-20%	-49%	-63%	-39%	-4%	-4%	-20%	-20%	5%	-19%	-36%	-16%	-23%
Tecopa	73%		75%					75%	10%	10%	-46%	-46%	-1%	219%	59%	-51%	224%
Walker (total)	-30%	-13%	-46%	75%		-100%	-100%	-19%	-9%	-9%	-17%	-25%	-14%	-7%	-11%	-8%	8%
Benton to Bishop	85%	145%	32%	0%			-20%	51%	14%	4%	12%	-1%	22%	87%	46%	8%	53%
Bishop DAR	-12%	-30%	10%	12%	54%	-37%	-7%	-7%	-13%	-13%	-16%	-13%	-5%	2%	7%	-3%	8%
Mule Days	25%	65%	-49%			282%	100%	27%	7%	6%	6%	11%	-2%	13%	20%	0%	15%
Nite Rider	26%	22%	33%	-16%	115%	-100%	130%	25%	6%	11%	7%	8%	0%	16%	13%	-4%	16%
Mammoth FR		14%				-3%		7%	13%	13%	10%	10%	N/A	N/A	-5%	-3%	-2%
Mammoth DAR	-29%	-32%	5%	-30%		67%	-80%	-31%	-26%	-26%	-34%	-36%	3%	12%	-6%	-11%	8%
Reno	-9%	-28%	-20%	29%	-50%	-14%	-67%	-23%	-1%	-1%	3%	3%	17%	-11%	-22%	4%	-25%
Lancaster	-10%	-9%	4%	-19%	-25%	233%	-29%	-8%	-7%	-8%	-8%	-8%	-3%	-3%	0%	1%	0%
Reds Meadow	38%	34%				35%	83%	35%	7%	5%	3%	5%	#VALUE!	#VALUE!	29%	-2%	28%
MMSA		-19%				-35%		-21%	-3%	-3%	-3%	-4%	N/A	N/A	-18%	0%	-18%

Complaints

There was one complaint received during the month of May 2014.

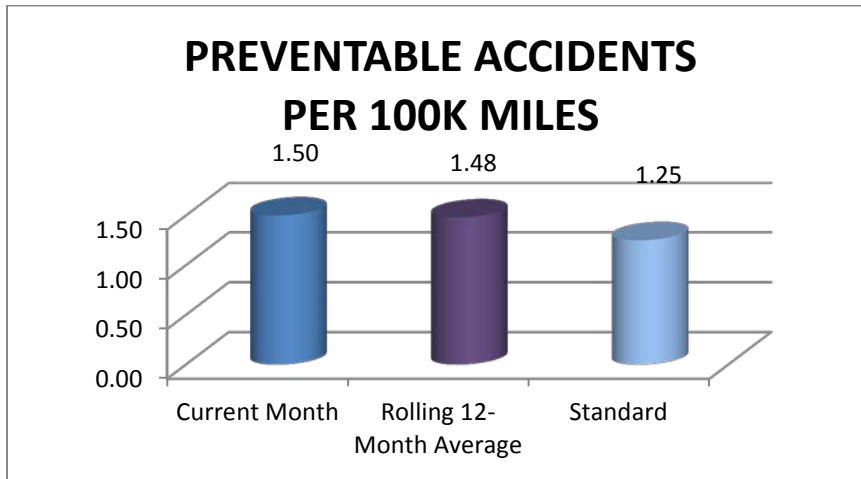
- May 21st - Passenger wrote to complain that the evening bus from Crowley to Bishop on May 16th was late, and that he was unable to obtain any information about the status of the bus. On that day the primary bus experienced a mechanical problem in Reno and had to be replaced with a spare bus out of Walker. This caused the route to run about 1.5 hours late. The replacement bus does not have a GPS transponder, which would allow it to provide NextBus predictions. Also, the scheduled Crowley stop time is 5:35pm, which is after the time that the office closes and when a passenger could reach someone by phone with this type of question. These factors were explained to the individual in a written response.



Accident/Incidents

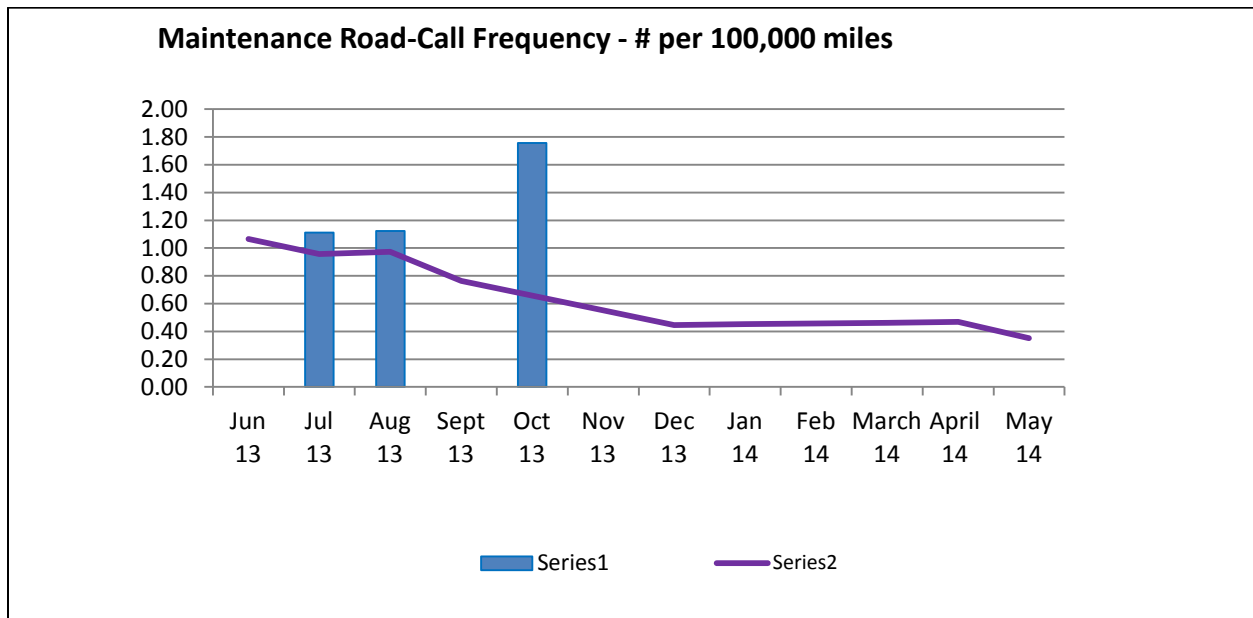
There was one preventable accident in May 2014.

- May 2nd - ESTA bus misjudged clearance and scraped another stationary ESTA bus when exiting the yard.



Road Call Frequency

There were no Road Calls during the month of May 2014. The rolling 12-month road call frequency is 0.35 per 100,000 miles traveled.



Missed Runs

There were no missed run in May 2014.

Bishop Area Dial-A-Ride Wait Times

Wait times for the Bishop Area Dial-A-Ride (Mon. through Fri., 7:00 a.m. – 5:00 p.m.)

Month of: MAY 2014

		Percent	Goal
Total Trips:	2578		
Total Immediate Response Calls:	1745		
Total Wait Time:	404:13		
Average Daily Wait:	13.9		< 20 minutes
Median Wait Time:	12		
# of Cancelations:	70	2.7 %	
# > 30 minute wait:	115	6.6 %	< 5%

