



MONTHLY REPORT

February 2014

	Feb-14	Jan-14	Percent Change	Feb-13	Percent Change
PASSENGERS					
Adult	91,567	93,073	-1.6%	116,639	-21.5%
Senior	1,268	1,363	-7.0%	1,382	-8.2%
Disabled	953	971	-1.9%	1,132	-15.8%
Wheelchair	381	430	-11.4%	386	-1.3%
Child	11,722	12,728	-7.9%	15,210	-22.9%
Child under 5	245	220	11.4%	499	-50.9%
Total Passengers	106,136	108,785	-2.4%	135,248	-21.5%
FARES	\$30,934.25	\$33,890.75	-8.7%	\$29,380.00	5.3%
SERVICE MILES	68,067	81,529	-16.5%	79,231	-14.1%
SERVICE HOURS	4,275	5,228	-18.2%	5,277	-19.0%
Passengers per Hour	24.82	20.81	19.3%	25.61	-3.1%

RIDERSHIP COMPARISON

Route	Feb-14	Feb-13	Variance	% Change
Mammoth Express	213	291	-78	-26.8%
Lone Pine to Bishop	305	406	-101	-24.9%
Lone Pine DAR	304	449	-145	-32.3%
Tecopa	3	14	-11	-78.6%
Walker (total)	158	150	8	5.3%
Benton to Bishop	72	43	29	67.4%
Bishop DAR	3,008	3,332	-324	-9.7%
Nite Rider	283	222	61	27.5%
Mammoth FR	30,544	27,407	3,137	11.4%
Mammoth DAR	368	433	-65	-15.0%
Reno	347	310	37	11.9%
Lancaster	358	361	-3	-0.8%
MMSA	69,495	101,616	-32121	-31.6%
June Lake Shuttle	542	124	418	337.1%

PASSENGERS PER SERVICE HOUR

Route	Feb-14	Feb-13	% Change
Mammoth Express	3.61	4.77	-24.3%
Lone Pine to Bishop	2.97	3.84	-22.6%
Lone Pine DAR	2.29	3.38	-32.3%
Tecopa	0.55	1.30	-58.1%
Walker (total)	1.13	1.06	6.5%
Benton to Bishop	2.98	1.79	66.3%
Bishop DAR	3.94	4.06	-3.1%
Nite Rider	4.86	3.96	22.6%
Mammoth FR	29.23	26.13	11.9%
Mammoth DAR	2.15	1.82	18.5%
Reno	1.84	1.61	14.4%
Lancaster	3.06	3.05	0.4%
MMSA	50.63	44.71	13.2%
June Lake Shuttle	5.80	2.33	148.4%

Route	Fares	Adults	Snr	Dis	W/C	Child	Free	Total Pax	Yd Hrs	Svc Hours	Yd Mi	SVC MILES	AVG FARE	REV/SVC MILE	PAX / SVC HR	MI / SVC HR	PAX / SVC MI
Feb-14																	
Mammoth Express	\$1,250.00	164	24	13	1	5	6	213	82	59	2,640	2,548	5.87	.49	3.61	44.7	0.08
Lone Pine to Bishop	\$1,508.25	185	60	30	1	19	10	305	120	103	4,596	4,464	4.95	.34	2.97	44.8	0.07
Lone Pine DAR	\$758.20	17	103	40	87	57	0	304	158	133	1,070	1,052	2.49	.72	2.29	8.0	0.29
Tecopa	\$30.00	0	3	0	0	0	0	3	6	6	94	94	10.00	.32	.55	17.1	0.03
Walker (total)	\$618.80	26	86	46	0	0	0	158	162	140	1,707	1,283	3.92	.48	1.13	12.2	0.12
Benton to Bishop	\$352.00	31	31	0	0	0	10	72	27	24	755	754	4.89	.47	2.98	31.2	0.10
Specials	\$0.00	24	0	30	0	82	0	136	6	1	216	199	.00	.00	136.00	216.0	0.68
Bishop DAR	\$6,872.40	1,047	861	504	273	155	168	3,008	907	764	9,048	8,278	2.28	.83	3.94	11.8	0.36
Nite Rider	\$1,082.60	228	7	16	14	0	18	283	69	58	1,005	975	3.83	1.11	4.86	17.3	0.29
Mammoth FR	\$0.00	26,068	0	5	0	4,471	0	30,544	1,117	1,045	15,020	14,502	N/A	N/A	29.23	14.4	2.11
Mammoth DAR	\$1,013.40	154	12	195	0	1	6	368	174	171	808	734	2.75	1.38	2.15	4.7	0.50
Reno	\$6,375.00	246	46	36	1	15	3	347	222	189	8,334	8,073	18.37	.79	1.84	44.2	0.04
Lancaster	\$4,633.60	254	35	29	4	12	24	358	142	117	5,588	5,481	12.94	.85	3.06	47.8	0.07
MMSA	\$0.00	62,582	0	9	0	6,904	0	69,495	1,518	1,373	18,144	17,213	N/A	N/A	50.63	13.2	4.04
June Lake Shuttle	\$6,440.00	541	0	0	0	1	0	542	108	93	2,648	2,417	11.88	2.66	5.80	28.3	0.22
Total	\$30,934.25	91,567	1,268	953	381	11,722	245	106,136	4,820	4,275	71,673	68,067	.29	.45	24.82	16.8	1.56
Feb-13																	
Mammoth Express	\$1,579.50	215	19	8	0	17	32	291	84	61	2,793	2,617	5.43	.60	4.77	45.7	0.11
Lone Pine to Bishop	\$2,021.10	274	57	48	7	15	5	406	123	106	4,655	4,508	4.98	.45	3.84	44.0	0.09
Lone Pine DAR	\$877.20	69	86	59	93	30	112	449	158	133	1,272	1,262	1.95	.70	3.38	9.6	0.36
Tecopa	\$70.00	0	14	0	0	0	0	14	12	11	327	327	5.00	.21	1.30	30.4	0.04
Walker (total)	\$560.40	6	101	41	0	0	2	150	155	142	1,573	1,310	3.74	.43	1.06	11.1	0.11
Benton to Bishop	\$182.00	17	16	0	0	0	10	43	24	24	713	713	4.23	.26	1.79	29.7	0.06
Specials	\$0.00	0	0	0	0	0	0	0	0	0	0	0	N/A	N/A	N/A	N/A	N/A
Bishop DAR	\$7,868.10	1,067	974	630	274	188	289	3,332	961	820	10,313	9,504	2.36	.83	4.06	12.6	0.35
Nite Rider	\$864.60	173	5	26	10	1	7	222	67	56	707	649	3.89	1.33	3.96	12.6	0.34
Mammoth FR	\$0.00	22,752	0	0	0	4,655	0	27,407	1,123	1,049	15,026	14,523	N/A	N/A	26.13	14.3	1.89
Mammoth DAR	\$1,116.60	189	12	182	0	21	29	433	257	239	1,124	1,054	2.58	1.06	1.82	4.7	0.41
Reno	\$5,741.00	211	54	41	0	1	3	310	222	193	8,462	8,225	18.52	.70	1.61	43.9	0.04
Lancaster	\$3,774.50	254	44	42	2	9	10	361	143	119	5,605	5,420	10.46	.70	3.05	47.3	0.07
MMSA	\$0.00	91,302	0	55	0	10,259	0	101,616	2,512	2,273	32,349	27,771	N/A	N/A	44.71	14.2	3.66
June Lake Shuttle	\$4,725.00	110	0	0	0	14	0	124	68	53	1,742	1,348	38.10	3.51	2.33	32.8	0.09
Total	\$29,380.00	116,639	1,382	1,132	386	15,210	499	135,158	5,908	5,277	86,661	79,231	.22	.37	25.61	16.4	1.71

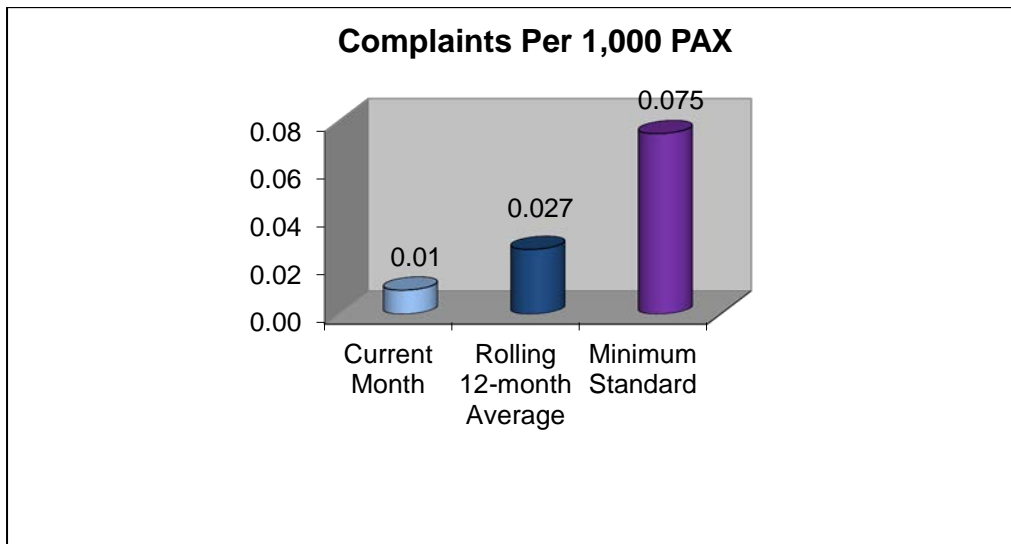
VARIANCE BY ROUTE (RAW NUMBERS) – Feb 2014 TO Feb 2013																	
ROUTES	FARES	ADULTS	SNR	DIS	W/C	CHILD	FREE	TOTAL PAX	YD HOURS	SVC HOURS	YD MILES	SVC MILES	AVG FARE	REV/SVC MILE	PAX / SVC HR	MI / SVC HR	PAX / SVC MI
Mammoth Express	-\$329.50	-51	5	5	1	-12	-26	-78	-2	-2	-153	-69	0.44	-0.11	-1.16	-1.03	-0.03
Lone Pine to Bishop	-\$512.85	-89	3	-18	-6	4	5	-101	-2	-3	-59	-44	-0.03	-0.11	-0.87	0.75	-0.02
Lone Pine DAR	-\$119.00	-52	17	-19	-6	27	-112	-145	0	0	-202	-210	0.54	0.03	-1.09	-1.52	-0.07
Tecopa	-\$40.00	0	-11	0	0	0	0	-11	-6	-5	-233	-233	5.00	0.11	-0.76	-13.33	-0.01
Walker (total)	\$58.40	20	-15	5	0	0	-2	8	8	-2	134	-27	0.18	0.05	0.07	1.08	0.01
Benton to Bishop	\$170.00	14	15	0	0	0	0	29	3	0	42	41	0.66	0.21	1.19	1.53	0.04
Bishop DAR	-\$995.70	-20	-113	-126	-1	-33	-121	-324	-54	-56	-1265	-1226	-0.08	0.00	-0.13	-0.74	0.01
Nite Rider	\$218.00	55	2	-10	4	-1	11	61	2	2	298	326	-0.07	-0.22	0.89	4.63	-0.05
Mammoth FR	\$0.00	3316	0	5	0	-184	0	3137	-6	-4	-6	-21	N/A	N/A	3.10	0.05	0.22
Mammoth DAR	-\$103.20	-35	0	13	0	-20	-23	-65	-82	-68	-316	-320	0.18	0.32	0.34	0.01	0.09
Reno	\$634.00	35	-8	-5	1	14	0	37	0	-4	-128	-152	-0.15	0.09	0.23	0.28	0.01
Lancaster	\$859.10	0	-9	-13	2	3	14	-3	-1	-1	-17	61	2.49	0.15	0.01	0.45	0.00
Reds Meadow	\$0.00	0	0	0	0	0	0	0	0	0	0	0	#DIV/0!	#DIV/0!	#####	#DIV/0!	#DIV/0!
June Lake Shuttle	\$1,715.00	431	0	0	0	-13	0	418	41	40	906	1069	-26.22	-0.84	3.46	-4.46	0.13

VARIANCE BY ROUTE (PERCENTAGE) – Feb 2014 TO Feb 2013																	
Route	Fares	Adults	Snr	Dis	W/C	Child	Free	Total Pax	Yd Hrs	Total Svc Hours	Yd Mi	TOT SVC MILES	AVG FARE	REV/SVC MILE	PAX / SVC HR	MI / SVC HR	PAX / SVC MI
Mammoth Express	-21%	-24%	26%	63%		-71%	-81%	-27%	-3%	-3%	-5%	-3%	8%	-19%	-24%	-2%	-25%
Lone Pine to Bishop	-25%	-32%	5%	-38%	-86%	27%	100%	-25%	-2%	-3%	-1%	-1%	-1%	-25%	-23%	2%	-24%
Lone Pine DAR	-14%	-75%	20%	-32%	-6%	90%	-100%	-32%	0%	0%	-16%	-17%	28%	4%	-32%	-16%	-19%
Tecopa	-57%		-79%					-79%	-51%	-49%	-71%	-71%	100%	49%	-58%	-44%	-25%
Walker (total)	10%	333%	-15%	12%			-100%	5%	5%	-1%	9%	-2%	5%	13%	7%	10%	8%
Benton to Bishop	93%	82%	94%				0%	67%	14%	1%	6%	6%	16%	83%	66%	5%	58%
Bishop DAR	-13%	-2%	-12%	-20%	0%	-18%	-42%	-10%	-6%	-7%	-12%	-13%	-3%	0%	-3%	-6%	4%
Nite Rider	25%	32%	40%	-38%	40%	-100%	157%	27%	3%	4%	42%	50%	-2%	-17%	23%	37%	-15%
Mammoth FR		15%				-4%		11%	-1%	0%	0%	0%	N/A	N/A	12%	0%	12%
Mammoth DAR	-9%	-19%	0%	7%		-95%	-79%	-15%	-32%	-28%	-28%	-30%	7%	30%	19%	0%	22%
Reno	11%	17%	-15%	-12%		1400%	0%	12%	0%	-2%	-2%	-2%	-1%	13%	14%	1%	14%
Lancaster	23%	0%	-20%	-31%	100%	33%	140%	-1%	-1%	-1%	0%	1%	24%	21%	0%	1%	-2%
MMSA		-31%		-84%		-33%		-32%	-40%	-40%	-44%	-38%	N/A	N/A	13%	-7%	10%
June Lake Shuttle	36%	392%				-93%		337%	60%	76%	52%	79%	-69%	-24%	148%	-14%	144%

Complaints

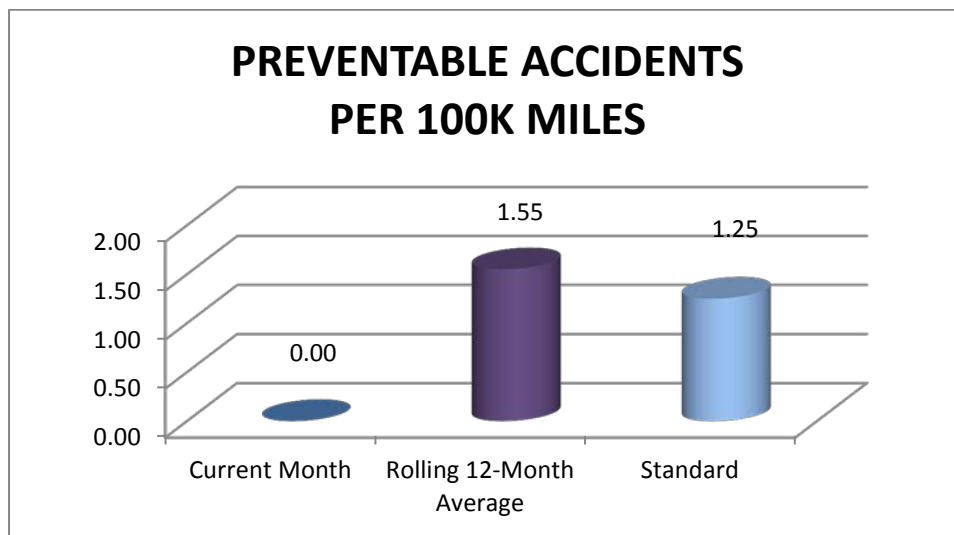
There was one complaint received during the month of February 2014.

February 11th - Passenger complained that the Red Line bus passed him by at stop #16. Driver counseled about being aware of passengers at stops, although the driver indicated that extremely wet conditions contributed to difficulties seeing out of the vehicle.



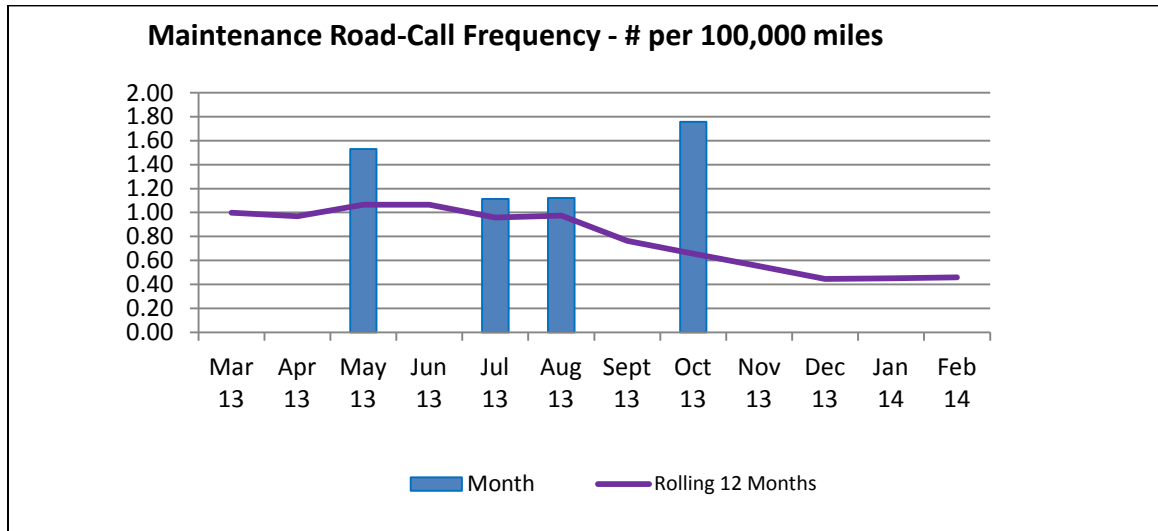
Accident/Incidents

There were no preventable accidents in February 2014.



Road Call Frequency

There were no Road Calls during the month of January 2014. The rolling 12-month road call frequency is 0.45 per 100,000 miles traveled.



Missed Runs

There was one missed runs in February 2014.

- February 19th – The mid-day Mammoth Express did not operated because of road closure due to wind

Bishop Area Dial-A-Ride Wait Times

Wait times for the Bishop Area Dial-A-Ride (Mon. through Fri., 7:00 a.m. – 5:00 p.m.)

Month of: February 2014

		Percent	Goal
Total Trips:	2,315		
Total Immediate Response Calls:	1,601		
Total Wait Time:	358:48		
Average Daily Wait:	13.4		< 20 minutes
Median Wait Time:	12		
# of Cancelations:	56	2.4 %	
**# > 30 minute wait:	88	5.4 %	

